

Please check the examination details below before entering your candidate information

Candidate surname

Other names

Centre Number

Candidate Number

Pearson Edexcel International GCSE

Tuesday 21 May 2024

Morning (Time: 2 hours)

Paper
reference

4PM1/01

Further Pure Mathematics PAPER 1



Calculators may be used.

Total Marks

Instructions

- Use **black** ink or ball-point pen.
- **Fill in the boxes** at the top of this page with your name, centre number and candidate number.
- Answer **all** questions.
- Without sufficient working, correct answers may be awarded no marks.
- Answer the questions in the spaces provided
– *there may be more space than you need.*
- You must **NOT** write anything on the formulae page.
Anything you write on the formulae page will gain **NO** credit.

Information

- The total mark for this paper is 100.
- The marks for **each** question are shown in brackets
– *use this as a guide as to how much time to spend on each question.*

Advice

- Read each question carefully before you start to answer it.
- Check your answers if you have time at the end.

Turn over ►

P76506A

©2024 Pearson Education Ltd.
E:1/1/1/1/1/1/



P 7 6 5 0 6 A 0 1 3 2



Pearson

International GCSE in Further Pure Mathematics Formulae sheet

Mensuration

Surface area of sphere = $4\pi r^2$

Curved surface area of cone = $\pi r \times$ slant height

Volume of sphere = $\frac{4}{3}\pi r^3$

Series

Arithmetic series

Sum to n terms, $S_n = \frac{n}{2}[2a + (n - 1)d]$

Geometric series

Sum to n terms, $S_n = \frac{a(1 - r^n)}{(1 - r)}$

Sum to infinity, $S_\infty = \frac{a}{1 - r}$ $|r| < 1$

Binomial series

$$(1 + x)^n = 1 + nx + \frac{n(n-1)}{2!}x^2 + \dots + \frac{n(n-1)\dots(n-r+1)}{r!}x^r + \dots \quad \text{for } |x| < 1, n \in \mathbb{Q}$$

Calculus

Quotient rule (differentiation)

$$\frac{d}{dx} \left(\frac{f(x)}{g(x)} \right) = \frac{f'(x)g(x) - f(x)g'(x)}{[g(x)]^2}$$

Trigonometry

Cosine rule

In triangle ABC : $a^2 = b^2 + c^2 - 2bc \cos A$

$$\tan \theta = \frac{\sin \theta}{\cos \theta}$$

$$\sin(A + B) = \sin A \cos B + \cos A \sin B$$

$$\sin(A - B) = \sin A \cos B - \cos A \sin B$$

$$\cos(A + B) = \cos A \cos B - \sin A \sin B$$

$$\cos(A - B) = \cos A \cos B + \sin A \sin B$$

$$\tan(A + B) = \frac{\tan A + \tan B}{1 - \tan A \tan B}$$

$$\tan(A - B) = \frac{\tan A - \tan B}{1 + \tan A \tan B}$$

Logarithms

$$\log_a x = \frac{\log_b x}{\log_b a}$$

DO NOT WRITE IN THIS AREA

DO NOT WRITE IN THIS AREA

DO NOT WRITE IN THIS AREA



Question 2 continued

DO NOT WRITE IN THIS AREA

DO NOT WRITE IN THIS AREA

DO NOT WRITE IN THIS AREA

Area with horizontal dotted lines for writing.

(Total for Question 2 is 5 marks)



P 7 6 5 0 6 A 0 5 3 2

Question 3 continued

DO NOT WRITE IN THIS AREA

DO NOT WRITE IN THIS AREA

DO NOT WRITE IN THIS AREA

Area with horizontal dotted lines for writing.

(Total for Question 3 is 8 marks)



P 7 6 5 0 6 A 0 7 3 2

4 The surface area of a sphere with radius r cm is increasing at a constant rate of 50π cm²/s

Find, in cm³, the exact volume of the sphere at the instant when the rate of increase

of r is $\frac{5}{12}$ cm/s

(8)

DO NOT WRITE IN THIS AREA

DO NOT WRITE IN THIS AREA

DO NOT WRITE IN THIS AREA



Question 4 continued

DO NOT WRITE IN THIS AREA

DO NOT WRITE IN THIS AREA

DO NOT WRITE IN THIS AREA

Area with horizontal dotted lines for writing.

(Total for Question 4 is 8 marks)



5 A particle P is moving along the x -axis.
At time t seconds ($t \geq 0$) the acceleration, a m/s², of P is given by $a = 3t - 4$

When $t = 0$, P is at rest.

(a) Find the velocity of P when $t = 4$ (3)

At time T seconds, $T > 0$, P is instantaneously at rest.

(b) Find the value of T (2)

When $t = 0$, P is at the point with coordinates $(-10, 0)$

(c) Find the displacement of P from the origin when $t = 3$ (4)

Dotted lines for writing answers.



Question 5 continued

DO NOT WRITE IN THIS AREA

DO NOT WRITE IN THIS AREA

DO NOT WRITE IN THIS AREA

Area with horizontal dotted lines for writing.

(Total for Question 5 is 9 marks)



P 7 6 5 0 6 A 0 1 1 3 2

6 The line l passes through the point A with coordinates $(-2, 2)$ and the point B with coordinates $(3, 12)$

The point C with coordinates (p, q) lies on l such that $AC : CB = 3 : 2$

- (a) Find the value of p and the value of q (2)

The line k is perpendicular to l and passes through the point C

- (b) Show that an equation of k is $2y + x - 17 = 0$ (4)

The line k crosses the x -axis at the point D

- (c) Find the exact length of CD (3)

The point X with coordinates (m, n) lies on l such that

$$\text{area of triangle } DXC = 80 \text{ units}^2$$

Given that $m > 0$

- (d) find the value of m and the value of n (7)

.....

.....

.....

.....

.....

.....

.....

.....

.....

.....

.....

.....

.....

.....

.....

.....

.....

.....

.....

.....

.....



Question 6 continued

DO NOT WRITE IN THIS AREA

DO NOT WRITE IN THIS AREA

DO NOT WRITE IN THIS AREA

Handwriting practice area with 25 horizontal dotted lines.



Question 6 continued

Area with horizontal dotted lines for writing.

DO NOT WRITE IN THIS AREA

DO NOT WRITE IN THIS AREA

DO NOT WRITE IN THIS AREA



Question 6 continued

DO NOT WRITE IN THIS AREA

DO NOT WRITE IN THIS AREA

DO NOT WRITE IN THIS AREA

Area with horizontal dotted lines for writing.

(Total for Question 6 is 16 marks)



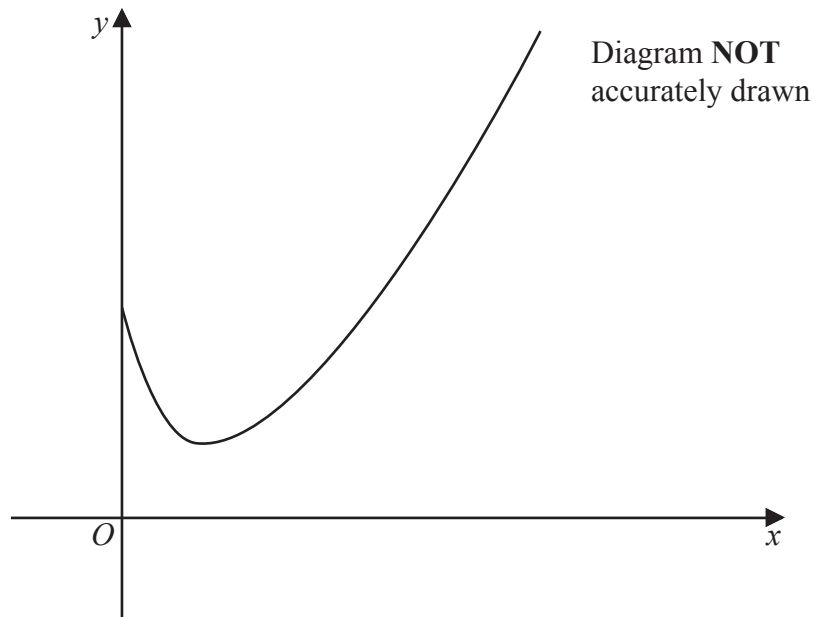


Figure 1

Figure 1 shows a sketch of part of the curve C with equation

$$y = \frac{x^2}{4} - 3\sqrt{x} + 8$$

The point P lies on C and has coordinates $(4, a)$

(a) Show that $a = 6$ (1)

The line L is the normal to C at the point P

(b) Show that an equation of L is $5y + 4x - 46 = 0$ (6)

The finite region R is bounded by the curve C , the line L , the x -axis and the line with equation $x = 1$

(c) Use calculus to find the exact area of R (6)

.....

.....

.....

.....

.....

.....

.....

.....

DO NOT WRITE IN THIS AREA

DO NOT WRITE IN THIS AREA

DO NOT WRITE IN THIS AREA



Question 7 continued

DO NOT WRITE IN THIS AREA

DO NOT WRITE IN THIS AREA

DO NOT WRITE IN THIS AREA

Handwriting practice area with 25 horizontal dotted lines.



P 7 6 5 0 6 A 0 1 7 3 2

Question 7 continued

Area with horizontal dotted lines for writing.

DO NOT WRITE IN THIS AREA

DO NOT WRITE IN THIS AREA

DO NOT WRITE IN THIS AREA



Question 7 continued

DO NOT WRITE IN THIS AREA

DO NOT WRITE IN THIS AREA

DO NOT WRITE IN THIS AREA

Area with horizontal dotted lines for writing.

(Total for Question 7 is 13 marks)



P 7 6 5 0 6 A 0 1 9 3 2

8 The sum of the first and second terms of a geometric series G is 400

The sum of the second and third terms of G is 100

(a) Show that the common ratio of G is $\frac{1}{4}$ (4)

(b) Show that the first term of G is 320 (2)

(c) Find the sum to infinity of G (2)

The sum to n terms of G is S_n

(d) Find, using logarithms, the least value of n such that

$$S_n > 426.6$$

(4)

.....

.....

.....

.....

.....

.....

.....

.....

.....

.....

.....

.....

.....

.....

.....

.....

.....

.....

.....

.....

.....

.....

.....



Question 8 continued

DO NOT WRITE IN THIS AREA

DO NOT WRITE IN THIS AREA

DO NOT WRITE IN THIS AREA

Handwriting practice area with 25 horizontal dotted lines.



P 7 6 5 0 6 A 0 2 1 3 2

Question 8 continued

Area with horizontal dotted lines for writing.

DO NOT WRITE IN THIS AREA

DO NOT WRITE IN THIS AREA

DO NOT WRITE IN THIS AREA



Question 8 continued

DO NOT WRITE IN THIS AREA

DO NOT WRITE IN THIS AREA

DO NOT WRITE IN THIS AREA

Area with horizontal dotted lines for writing.

(Total for Question 8 is 12 marks)



P 7 6 5 0 6 A 0 2 3 3 2

Question 9 continued

DO NOT WRITE IN THIS AREA

DO NOT WRITE IN THIS AREA

DO NOT WRITE IN THIS AREA

Area with horizontal dotted lines for writing.



Question 9 continued

Area with horizontal dotted lines for writing.

DO NOT WRITE IN THIS AREA

DO NOT WRITE IN THIS AREA

DO NOT WRITE IN THIS AREA



Question 9 continued

DO NOT WRITE IN THIS AREA

DO NOT WRITE IN THIS AREA

DO NOT WRITE IN THIS AREA

Area with horizontal dotted lines for writing.

(Total for Question 9 is 9 marks)



P 7 6 5 0 6 A 0 2 7 3 2

Question 10 continued

DO NOT WRITE IN THIS AREA

DO NOT WRITE IN THIS AREA

DO NOT WRITE IN THIS AREA

Area with horizontal dotted lines for writing.



P 7 6 5 0 6 A 0 2 9 3 2

Question 10 continued

Handwriting practice area consisting of 25 horizontal dotted lines.

DO NOT WRITE IN THIS AREA

DO NOT WRITE IN THIS AREA

DO NOT WRITE IN THIS AREA



Question 10 continued

DO NOT WRITE IN THIS AREA

DO NOT WRITE IN THIS AREA

DO NOT WRITE IN THIS AREA

Handwriting practice area with 25 horizontal dotted lines.



